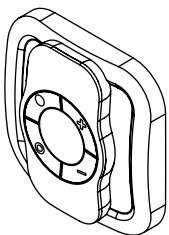


USER GUIDE



OCTAN REMOTE



OCTAN Remote with wall support

Reference: CRC-3-1-0x
 Power supply: CR2032 battery
 Radio frequency: 868MHz
 Range up to 80 meters outdoor
 Range up to 40 meters indoor
 Operational temperature: -10°C / 50°C
 IP20
 Radio protocol: Z-Wave Plus® (500 series)
 Dimensions: 80 mm (L) x 80 mm (U) x 17.5 mm (H)
 Weight: 68 g (with wall plate)
 Warranty: 2 years

The NodOn® Octan remote can be added and operated in any Z-Wave® network with other Z-Wave® certified devices from other manufacturers and/or other applications.

All non-battery operated nodes within the network will act as repeaters regardless of vendor to increase reliability of the network.

It has 2 distinctive working modes:

1. «STANDALONE» MODE

The Octan remote can control Z-Wave® compatible devices directly, such as the NodOn® Smart Plug or a light dimmer, whoever is the manufacturer.

Note: No home automation gateway is involved and necessary in this mode.

2. «GATEWAY» MODE

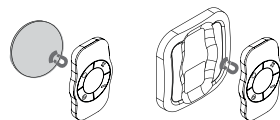
The Octan remote is in "Gateway" Mode as soon as it is added in a Z-Wave® network managed by a home automation gateway. The remote control becomes then the gateway's assistant, capable to launch up to 16 different scenes through it (SCENE Profile) or directly associated to your Z-Wave® compatible devices (MONO or DUO Profile).

WALL SUPPORT

A magnetic wall support is included with your Octan Remote. This support can be screwed (screws not included) or fixed by adhesive bonding (included).



The remote control embeds a small magnet, allowing fixing it on its wall support or on any metallic surface (fridge door, heater, etc.).

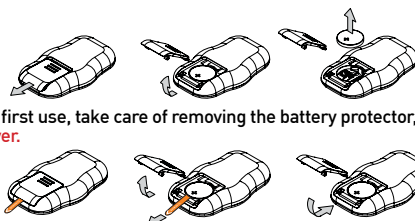


USAGE

BATTERY REPLACEMENT

The Octan remote operates using a CR2032 coin cell battery (included).

To replace the battery, slide slowly the battery cover, located on the backside of the remote.

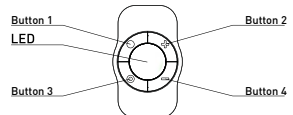


Before the first use, take care of removing the battery protector, after opening the battery cover.

Careful: In order to save as much as possible the battery life time, avoid too long learning process, and place the remote control as close as possible to the device you want to associate.

OCTAN REMOTE INTERFACE

The remote control has 4 buttons and one LED located at the center of the product.

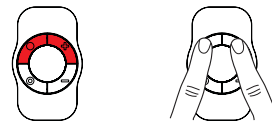


BATTERY LEVEL

In order to know the battery level, a simultaneous short press on ● and + must

be performed. The LED will display the battery level according to below table:

LED state	Battery level
Green	Under 50%
Orange	Between 50 and 20%
Red	Below 20%

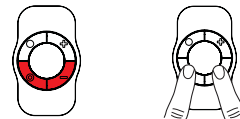


FACTORY RESET

A factory reset will completely delete the memory of the remote control and restore all the parameters to default value.

A simultaneous long press (1sec) on ● and — will perform this factory reset.

The LED will blink red and green to validate the reset



Careful: In "Standalone" Mode, make sure to remove all the devices added or associated in the remote control's network before performing a factory reset.

In "Gateway" Mode, use the factory reset procedure only when the Primary Controller (i.e. the gateway) is missing or defective. Reset the remote control does not mean that it has been removed from the Primary Controller memory. Remove the remote controller (through the Primary Controller) before performing a factory reset.

«STANDALONE» MODE

By default, the Octan remote is in "Standalone" Mode. It means it can control compatible Z-Wave® devices without involving the gateway. The Octan remote acts as the Primary Controller of the network.

While the remote control is in "Standalone" Mode, you can:

- Control one or several devices (up to 8) with only 1 button: MONO Profile.
- Control one or several devices (up to 8) with 2 buttons: DUO Profile.

Careful: You must not unplug a Z-Wave® device definitely without removing it from the remote control's Z-Wave® network first (See the "Exclusion" part below). This can have a serious impact on the battery lifetime.

ASSOCIATION

Careful: Before associating a not recently bought device, please perform an "EXCLUSION" first. Please refer to the "Exclusion" section below.

Association is performed in 3 steps:

1 Push 3 times (quickly) on the ● button to activate the "Association" Mode.

The LED glows in blue

2 Choose which button will control your device, within 10 seconds.

- A short press on one of the buttons of the remote control (●, ●, + or —) will activate the MONO Profile. The pressed button will then control your device.
- A long press on the ● button will activate the DUO Profile, combined with the ● button. The ● (ON) and ● (OFF) buttons will then control your device.
- A long press on the + button will activate the DUO profile, combined with the — button. The + (ON) and — (OFF) buttons will then control your device.

The LED blinks in blue to confirm your choice

3 Place the device you want to associate in "Learning" Mode, within 10 seconds. To do so, please refer to your device's user guide.

The LED of the remote control blinks green to confirm the association process

Careful: In case of a too long association process or others problems during the process, the LED will blink red (Timeout). Please restart the procedure.

Once the association is validated, your remote control is able to control your device. Different actions are possible.

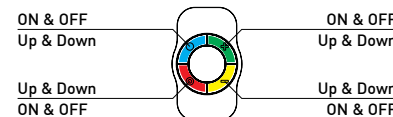
MONO PROFILE

This profile allows controlling your associated device(s) using just a single button of the Octan remote.

A short press on ●, ●, + or — (depending on your choice during association process) will activate (ON) your associated device(s), a second short press will deactivate (OFF) your associated device(s).

If your device has dimming features (light dimmer, roller shutter, etc.):

- A long press on the ●, ●, + or — (depending on your choice during association process) will dim up your associated device (light, roller shutter, etc.) until you release the button.
- A second long press on the same button will dim down your associated device (light, roller shutter, etc.) until you release the button.



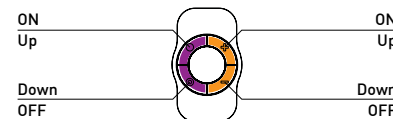
DUO PROFILE

This profile allows controlling your associated device(s) with two mutual buttons.

- A short press on ● (or + depending on your combination choice during association process) will activate (ON) your associated device(s).
- A short press on ● (or — depending on your combination choice during association process) will deactivate (OFF) your associated device(s).

If your associated device(s) has dimming features (light dimmer, roller shutter, etc.):

- A long press on ● (or + depending on your combination choice during association process) will dim up your associated device (light, roller shutter, etc.) until you release the button.
- A long press on ● (or — depending on your combination choice during association process) will dim down your associated device (light, roller shutter, etc.) until you release the button.



Careful: It's not possible to cumulate a MONO and DUO profile on the same button.

Repeat the association process as many times as you want to associate a new device.

DESASSOCIATION

The disassociation deletes any association relationship between the device and the remote control's buttons linked to it. However, your device will remain in your remote control's Z-Wave® network.

1 Push 3 times (quickly) on the + button.

The LED blinks in blue

2 Place the device you want to disassociate in "Learning" Mode, within 10 seconds. To do so, please refer to your device's user guide.

The LED blinks in green to confirm the disassociation

INCLUSION

Inclusion allows adding a device into the remote control's Z-Wave® network, without associating it with any buttons of the remote control. The remote control will then not be able to control your added device.

1 Push 3 times (quickly) on the ● button.

The LED blinks in blue

2 Place the device you want to add in "Learning" Mode, within 10 seconds. To do so, please refer to your device's user guide.

The LED blinks in green to confirm the inclusion

EXCLUSION

Exclusion allows removing your device from the remote control's Z-Wave® network.

- 1 Push 3 times (quickly) on the **—** button.

The LED blinks in blue

- 2 Place the device you want to remove in "Learning" Mode, within 10 seconds. To do so, please refer to your device's user guide.

The LED blinks in green to confirm the exclusion

« GATEWAY » MODE

When the Octan remote is in "Gateway" Mode, it only communicates with the home automation gateway, in order to launch scenes when the buttons are pressed.

However, if your home automation gateway does not support scenes features, it is still possible to create direct association between the remote control and the compatible devices you want to control, through configuration parameters and association groups.

Nonetheless, if supported, it is strongly advised to use scenes, in order to enjoy the best experience and increase the battery lifetime.

In order to put your remote control into "Gateway" Mode, you just have to add the remote control into the gateway's Z-Wave® network. Procedure as following:

- 1 Place your home automation gateway into "Inclusion" Mode. To do so, please refer to your gateway's user guide.

- 2 Simultaneously push on **●** and **+**, during 1sec.

The LED glows in pink to confirm the selection

- 3 Push on **●**, within 10 seconds.

The LED blinks in pink to confirm your choice

The LED blinks in green to confirm the procedure

Warning: If your remote control controlled before some devices in "Standalone" Mode, these devices will remain orphans. Make sure you remove (or reset) all devices previously added or associated into the remote control's network, before placing the remote control in "Gateway" Mode.

If your home automation gateway supports the "Controller shift" feature, you can recover the existing remote control's network (while it is in "Standalone" Mode) when you pass into "Gateway" Mode.

Your home automation gateway will be added into the remote controller's network, and set as the main controller. All the information related to the added devices will be automatically copied to the home automation gateway during this process. However, all existing association between the remote control and devices will be lost, and would need to be set-up again, using your home automation gateway interface.

The existing network of the gateway will be lost as well

The procedure is as following:

- 1 Place your home automation gateway into "Learning" Mode. To do so, please refer to your gateway's user guide.

- 2 Simultaneously push on **●** and **+**, during 1sec.

The LED glows in pink to confirm the selection

- 3 Push on **+**, within 10 seconds.

The LED blinks in pink to confirm your choice

The LED blinks in green to confirm the procedure

REMOVE THE REMOTE CONTROL FROM THE NETWORK

In order to remove the remote control from the gateway's Z-Wave® network:

- 1 Place your gateway into "Exclusion" Mode. To do so, please refer to your gateway's user guide.

- 2 Simultaneously push on **●** and **+**, during 1sec.

The LED glows in pink to confirm the selection

- 3 Push on **●**, within 10 seconds.

The LED blinks in pink to confirm your choice

The LED blinks in green to confirm the procedure

Expert Note: It's possible to send just a single NIF by following this procedure:

- 1 Simultaneously push on **●** and **+**, during 1sec

The LED glows in pink to confirm the selection

- 2 Push on **●**, within 10 seconds

The LED blinks in pink to confirm your choice

"GATEWAY MODE" FEATURES

Warning: Make sure your gateway supports all the features of the Octan remote (compatible gateway are listed on www.nodon.fr/en).

INCLUSION ON BEHALF OF THE GATEWAY

- 1 Push 3 times (quickly) on the **●** button.

The LED blinks in blue

- 2 Place the device you want to add in "Learning" Mode, within 10 seconds. To do so, please refer to your device's user guide.

The LED blinks in green to confirm the inclusion

EXCLUSION ON BEHALF OF THE GATEWAY

- 1 Push 3 times (quickly) on the **—** button.

The LED blinks in blue

- 2 Place the device you want to remove in "Learning" Mode, within 10 seconds. To do so, please refer to your device's user guide.

The LED blinks in green to confirm the exclusion

ASSOCIATION GROUPS

Once set-up through the gateway, association groups allow direct communication between the remote control and the Z-Wave® devices you want to control, without involving the gateway in the communication.

The Octan Remote has 7 associations groups:

Group	Groupe Name
1	Lifeline
2	Button 1 - Mono - Controlled nodes
3	Button 2 - Mono - Controlled nodes
4	Button 3 - Mono - Controlled nodes
5	Button 4 - Mono - Controlled nodes
6	Button 1&3 - Duo - Controlled nodes
7	Button 2&4 - Duo - Controlled nodes

Group 1 - Lifeline

Maximum number of devices in the group: 1

This group is dedicated for the home automation gateway

Group 2/3/4/5

Maximum number of devices in the group: 8

Devices associated in these groups are controlled by the corresponding button, according to MONO Profile (in the exact same way as « Standalone » Mode).

Group 6/7

Maximum number of devices in the group: 8

Devices associated in these groups are controlled by the corresponding buttons, according to DUO Profile (in the exact same way as « Standalone » Mode).

CONFIGURATION PARAMETERS

Buttons' profile (MONO/DUO/SCENE), in « Gateway » Mode, are set-up through several configuration parameters.

BUTTONS 1&3 PROFILE

Parameter Number	Default Value	Size
1	0	1 [byte]
To set-up the profile of buttons 1 & 3		
Value	Description	
0	SCENE	
1	MONO	
2	DUO	

BUTTONS 2&4 PROFILE

Parameter Number	Default Value	Size
2	0	1 [byte]
To set-up the profile of buttons 2 & 4		
Value	Description	
0	SCENE	
1	MONO	
2	DUO	

SCENE TYPE

Parameter Number	Default Value	Size
3	0	1 [byte]
To choose the way of sending Scene to the gateway		

Value	Description
0	CENTRAL SCENE
1	SCENE ACTIVATION

We strongly advise you to use « CENTRAL SCENE », which is more user friendly. However, some home automation gateways don't support « CENTRAL SCENE » yet, then you can still use the previous standard « SCENE ACTIVATION ».

The user interface of your gateway will then allow you to set-up scenes

BUTTON 1 CONFIGURATION

Parameter Number	Default Value	Size
4	0	1 [byte]
To set-up the how button 1 behaves, when set in MONO Profile		
Value	Description	
0	Control Group 2	
1	All Switch ON	
2	All Switch OFF	

BUTTON 2 CONFIGURATION

Parameter Number	Default Value	Size
5	0	1 [byte]
To set-up the how button 2 behaves, when set in MONO Profile		
Value	Description	
0	Control Group 3	
1	All Switch ON	
2	All Switch OFF	

BUTTON 3 CONFIGURATION

Parameter Number	Default Value	Size
6	0	1 [byte]
To set-up the how button 3 behaves, when set in MONO Profile		
Value	Description	
0	Contrôle Groupe 4	
1	All Switch ON	
2	All Switch OFF	

BUTTON 4 CONFIGURATION

Parameter Number	Default Value	Size
7	0	1 [byte]
To set-up the how button 4 behaves, when set in MONO Profile		
Value	Description	
0	Control Group 5	
1	All Switch ON	
2	All Switch OFF	

When the selected profile is « SCENE » (default value), the remote control communicates only with the home automation gateway. The user interface of your gateway will then allow you to set-up scenes based on which (and which way) you press the different buttons. To do so, please refer to your gateway's user guide.

The different actions that can be handled by the remote control are:

- Simple press (on **●**, **○**, **+** or **—**)
- Double press (on **●**, **○**, **+** or **—**)
- Long press (on **●**, **○**, **+** or **—**)
- Button released (on **●**, **○**, **+** or **—**)

Which makes a total of 16 different actions.

It is strongly advised to use this profile if supported by your gateway.

However, if your home automation gateway does not support these features, you can still use association groups and set-up your buttons as

- MONO Profile, to control the corresponding group or activate the Z-Wave® « All Switch ON » or « All Switch OFF » features.
- DUO Profile, to control the corresponding groups.

LED MANAGEMENT

Parameter Number	Default Value	Size
8	0	1 [byte]
How to set up LED behaviour		
Value	Description	
0	No LED	
1	Flash Blue after button press	
2	Blinking to confirm command	
3	Both options above (1&2)	

COMMAND CLASS

The Octan remote supports the following Command Class:

COMMAND CLASS	VERSION
All switch*	V1
Application status*	V1
Association	V2
Association Group Information	V1
Basic*	V1
Battery	V1
Central Scene**	V2
Configuration	V1
Device Reset Locally	V1
Manufacturer Specific	V2
Multilevel Switch*	V3
Power Level	V1
Scene Activation*	V1
Version	V2
Wake-Up**	V2
Z-Wave® Plus info**	V2

* Controlled only (not supported)

** Controlled AND supported

DECLARATION OF CONFORMITY

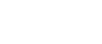
EN 301489-1 V1.9.2 & EN301489-3: V1.4.1

EN 62479: 2011-9

EN 60950-1:2006+A11:2009+A1:2010

EN 300220-1: V2.4.1 & EN 300220-2: V2.4.1

LOGOTYPE



This product is compliant with all relevant European standards.

When sorting your waste, please observe the disposal regulations in force. Please place your waste in the facilities provided for that purpose and with all due respect for the environment.

This product must be used indoor only.

This product is compatible with Z-Wave® and Z-Wave Plus® protocol.

CONTACT

NodOn® by ID-RF:

ID-RF SAS

121 rue des Hêtres

45590 St CYR EN VAL (FRANCE)

AFTER SALES

www.nodon.fr section "support"

contact@nodon.fr

For user guides in other languages, please visit

www.nodon.fr/notices